



SPARE PARTS EXPLODED VIEW
WALL-HUNG GAS BOILERS

Models

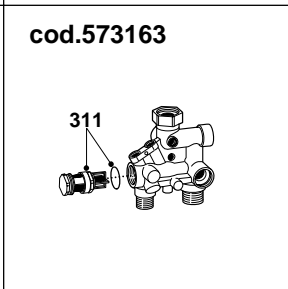
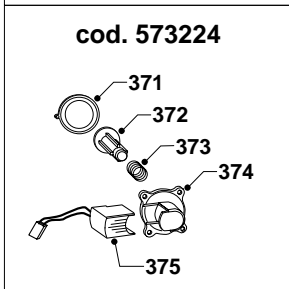
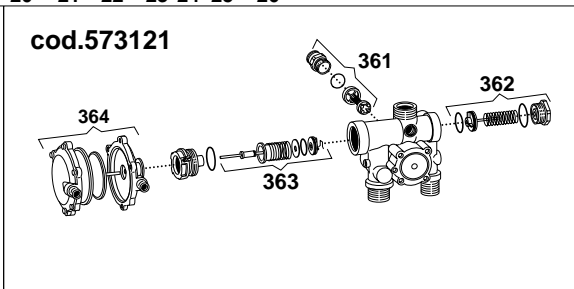
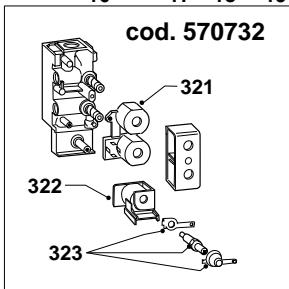
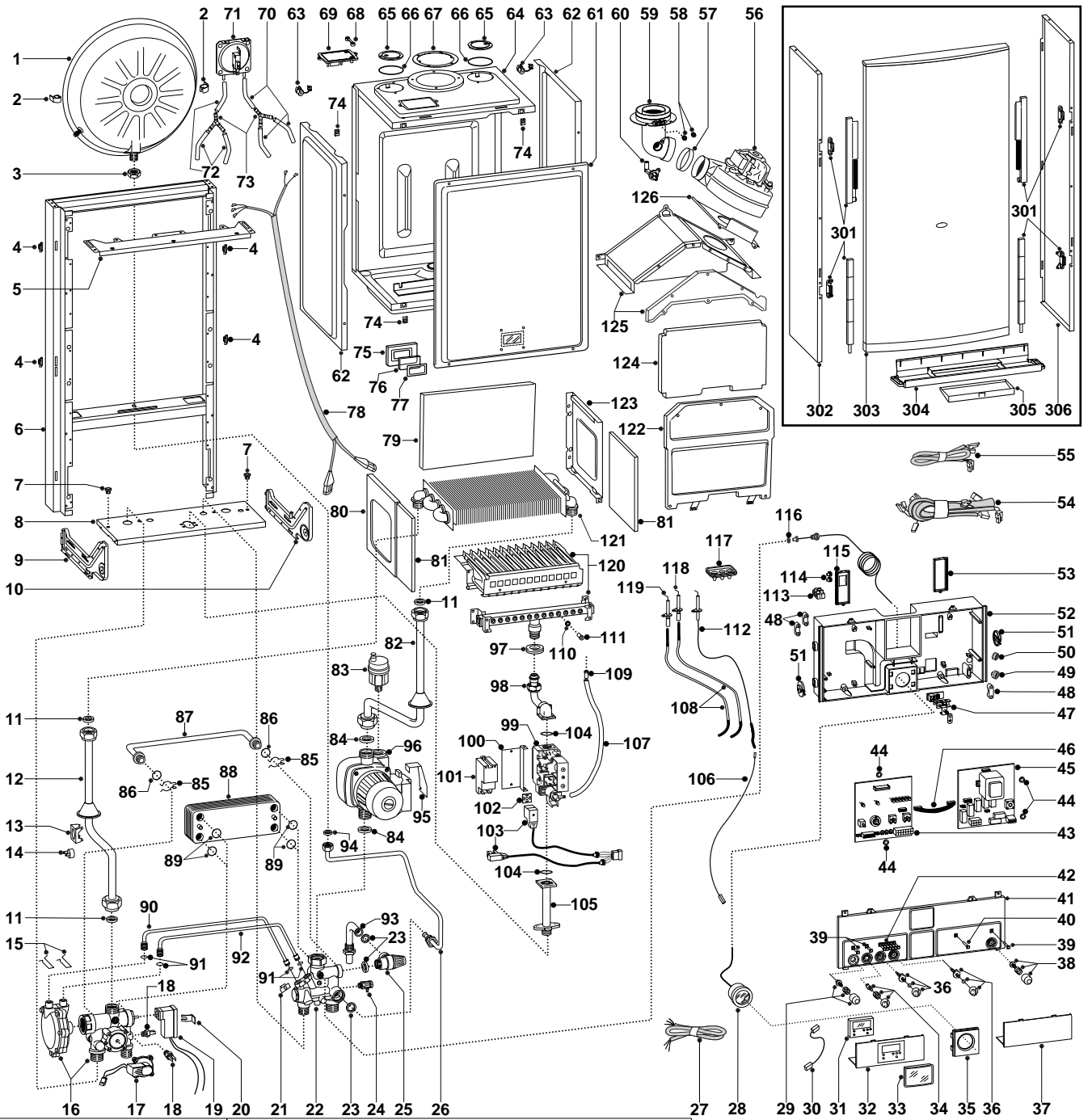
GENUS 23 MFFI UK

GENUS 27 MFFI UK

Edition 2

Current from Serial No:- 231983610060 to 2320004900093





MODELS	CHARACTERISTICS	SERIAL NO: VALIDITY	REF.
GENUS 23 MFFI UK	METHANE	983610060	A
GENUS 23 MFFI UK	LPG	983610160	B
GENUS 27 MFFI UK	METHANE	983610260	C
GENUS 27 MFFI UK	LPG	983610360	D

PART	CODE	DESCRIPTION	REF.	NOTE
1	573294	Expansion vessel		
2	573310	Expansion vessel insert		
3	573244	3/8" lock nut		
4	574302	Casing support bracket (plastic)		
5	572984	Casing support bracket		
6		Frame		11
7	570772	Cable holder		
8		Hydraulic support		11
9	574292	Hydraulic support bracket (L.H.)		
10	574291	Hydraulic support bracket (R.H.)		
11	573520	Gasket 3/4"		
12	997199	Pipe (Main exchanger/3-way-group)	AB	
12	997200	Pipe (Main exchanger/3-way-group)	CD	
13	997224	Overheat thermostat fixing spring		
14	997206	Overheat thermostat		
15	573809	Spring (water venturi)		
16	573121	3-way/main flow group		
17	573224	Main flow Group		
18	569236	Temp probe (C.H.W.)		
19	573340	Microswitch for 3-way/main flow group		
20	573824	Microswitch bracket (main flow)		
21	571838	Pipe fixing clip		
22	573163	Return group		
23	573528	Gasket 1/2"		
24	573727	Manual vent cock		
25	573172	Safety valve 3 bar 1/2"		
26	573311	Pipe (expansion vessel)		
27	998012	Main power supply cable		
28	571649	Pressure gauge		
29	573300	Release push-button kit		
30	997180	Time clock connection cable		
31	997208	Time clock		
32	997205	Cover with time clock insert		
33	997142	Cover (time clock protection)		
34	573302	Summer/Winter selector Kit		
35	572948	Pressure gauge cover		
36	573301	Regulation knob kit		
37	571628	Inspection cover (R.H.)		
38	573303	On-Off push-button kit		
39	571550	Power indicator L.E.D. lens		
40	572659	Flue L.E.D. cover (white)		
41	997020	Control panel (front)		
42	571551	Temperature L.E.D. bank lens		
43	953045	P.C.B. E C-MI/FFI		
44	569711	Nylon bush 10mm		
45	952981	P.C.B. EI A-MFFI		
46	952610	P.C.B. cable		
47		Terminal board		11
48	571562	Cable clamp		
49	569458	Cable holders silicone D.2		
50	573534	Cable holder D.75		
51	571558	Control panel rotor		
52	997204	Control panel		
53	569713	Cable holder cover (R.H.)		
54	574272	High voltage wiring		
55	998048	Low voltage wiring		
56	572989	Fan	AB	
56	572990	Fan	CD	
57	573343	Fan inlet gasket		
58	573326	Flue intake plug		
59	573333	Flue exhaust manifold / header		
60	573314	Exhaust manifold/header Venturi		
61	573344	Sealed chamber front panel		

PART	CODE	DESCRIPTION	REF.	NOTE
62	573247	Sealed chamber side panel		11
63	570561	Fan power supply cord clamp		
64		Sealed chamber box-shaped casing		11
65	573330	Air return cover		
66	573865	Flue manifold gasket		
67	573337	Flue manifold gasket		
68	573329	Pressure gauge pressure intake cover		
69	997203	Air pressure switch support plate		
70	571575	Silicone pipe (positive signal)		
71	571651	Air pressure switch	AB	
71	571652	Air pressure switch	CD	
72	569662	Silicone pipe		
73	573327	Y-piece (air pressure)		
74	570717	Fastening spring		
75	573566	View window holder		
76	573567	View window glass		
77	569442	View window seal		
78	573017	Cable (fan/air pressure switch)		
79	573723	Back insulation panel	AB	
79	573724	Back insulation panel	CD	
80	573243	Combustion chamber panel (L.H.)		
81	573720	Side insulation panel		
82	572906	Pipe (main exchanger/pump)	CD	
82	573313	Pipe (main exchanger/pump)	AB	
83	564254	Automatic air release valve		
84	569387	Gasket 1"		
85	573808	By-pass pipe spring		
86	571449	O-ring		
87	573245	By-pass pipe		
88	571646	Secondary exchanger (plate-type) exchanger 23kW	AB	
88	573295	Secondary exchanger (plate-type) exchanger 27kW	CD	
89	573825	O-ring (secondary exchanger)		
90	573086	Pipe (main flow switch positive signal)		
91	571807	O-ring (20-18)		
92	573087	Pipe (main flow switch negative signal)		
93	998019	Safety valve outlet pipe		
94	573521	Gasket 3/8"		
95	997146	Pump connector bracket		
96	997150	Pump	AB	
96	997151	Pump	CD	
97	569443	Silicone seal		
98	573289	Pipe (Gas valve to burner)		
99	570732	Gas valve (SIT tandem)		
100	573285	Spark generator support		
101	573023	Spark generator		
102	573022	Clamp		
103	998035	High voltage cable		
104	571965	O-ring (13)		
105	997202	Pipe (gas inlet)		
106	571657	Cable (detection electrode/P.C.B.)		
107	573576	Compensation tube		
108	571662	Ignition electrode cable		
109	573325	Rivet		
110	572138	Burner jet washer		
111	570248	Burner jet 1.25mm	AC	
111	570251	Burner jet 0.72mm	BD	
112	573441	Detection electrode		
113	571787	Terminal board		
114	569720	Blind grommet		
115	569714	Cable holder cover (L.H.)		
116	569390	Gasket 1/4"		
117	573336	Ignition electrode cable rubber		
118	569560	Ignition electrode (R.H.)		

PART	CODE	DESCRIPTION	REF.	NOTE
119	569561	Ignition electrode (L.H.)		
120	572271	Main burner	A	
120	572277	Main burner	B	
120	572343	Main burner	C	
120	572372	Main burner	D	
121	572749	Main exchanger	AB	
121	572835	Main exchanger	CD	
122	997766	Combustion chamber front	AB	
122	572648	Combustion chamber front	CD	
123	573242	Combustion chamber panel (R.H.)		
124	573721	Front insulation panel	AB	
124	573722	Front insulation panel	CD	
125	997767	Sealed chamber flue hood	AB	
125	573249	Sealed chamber flue hood	CD	
126	573047	Fan fixing plate	AB	
126	573465	Fan fixing plate	CD	
301	571993	Front panel runner kit		
302	573012	Casing panel (L.H.)		
303	999437	Casing panel (front)		
304	997169	Bottom cover		
305	997166	Warning plate lid		
306	573011	Casing panel (R.H.)		
311	571444	D.H.W. actuator kit		
321	570712	SIT Tandem gas valve operator coils		
322	573740	SIT Tandem modureg coil		
323	573745	Gas modulator cartridge		
361	571443	Heating by-pass kit		
362	571442	D.H.W. pressure switch kit		
363	571447	3-way spring kit		
364	571446	D.H.W. diaphragm valve		
371	571547	Main flow switch diaphragm		
372	571772	Main flow switch magnet		
373	571771	Main flow switch spring		
374	571770	Main flow switch top cap		
375	573138	Main flow switch reed system		
381	569281	Burner jet 1.25 full kit (Natural gas)		12
382	569282	Burner jet 0.72 full kit (LPG)		12

