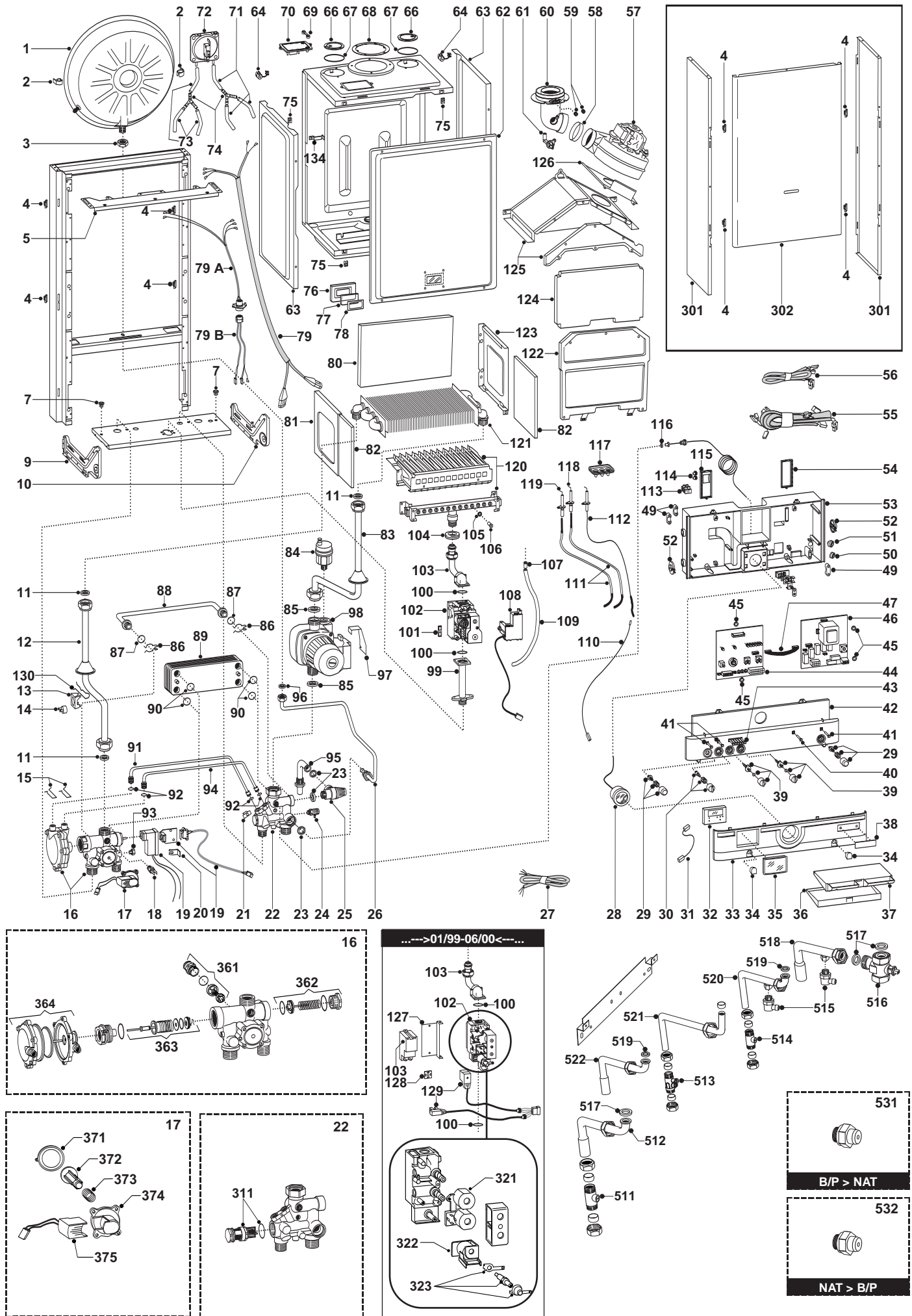
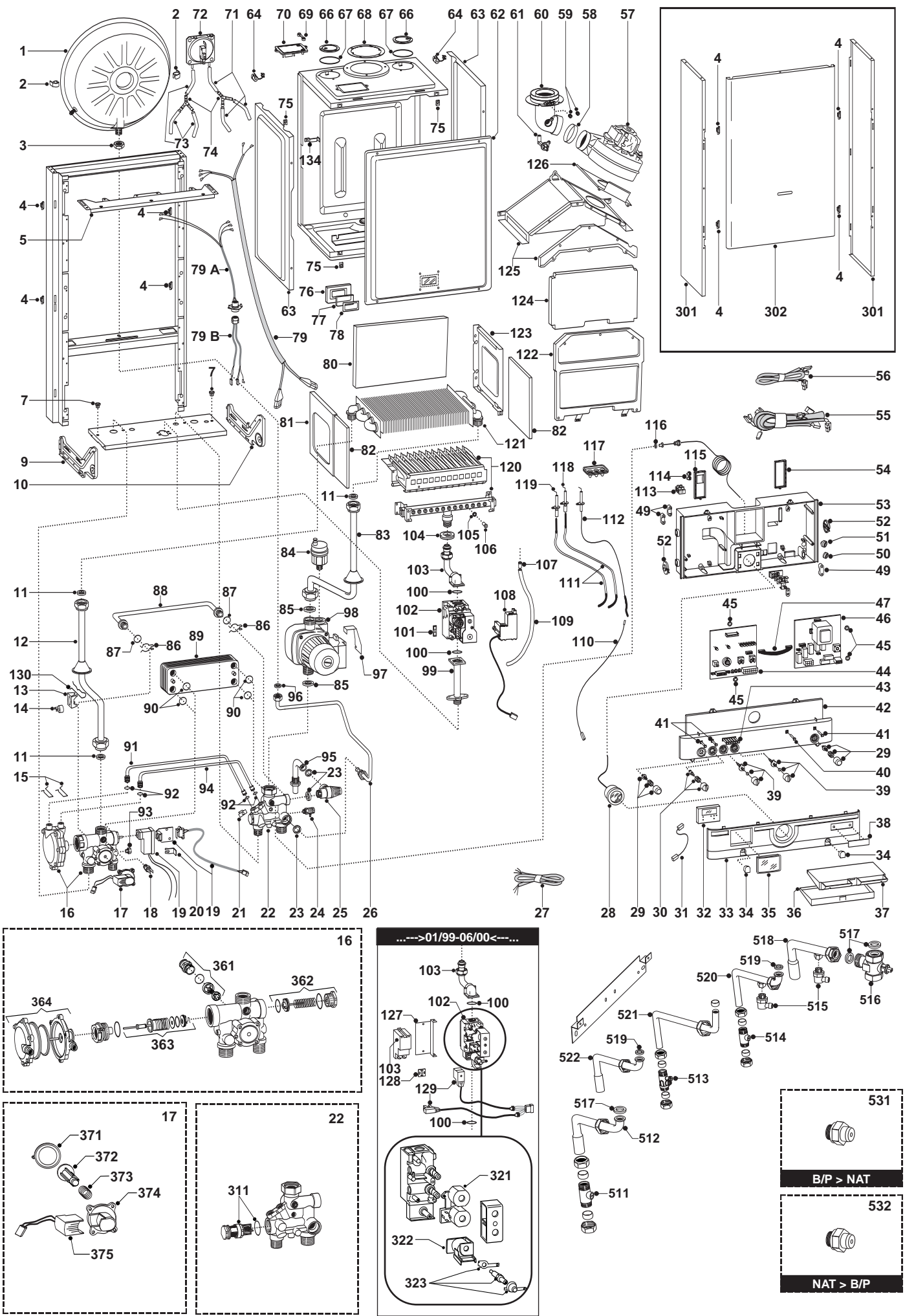


Key N	Description	Manf. Pt. N	Type	EUROCOMBI A		Manf. date	
				23	27	from	to
0001	EXPANSION VESSEL	573294		•	•		
0002	EXPANSION VESSEL INSERT	999679		•	•		
0003	3/8 LOCK NUT	573244		•	•		
0004	CASING SUPPORT BRACKET (PLASTIC)	574302		•	•		
0005	CASING SUPPORT BRACKET	572984		•	•		
0007	CABLE HOLDER	570772		•	•		
0009	SUPPORT BRACKET (L/H)	998042		•	•	07/00	
	SUPPORT BRACKET (L/H)	571634		•	•		06/00
0010	HYDRAULIC SUPPORT BRACKET (R/H)	998041		•	•	07/00	
	HYDRAULIC SUPPORT BRACKET (R/H)	574291		•	•		06/00
0011	GASKET 3/4	573520		•	•		
0012	PIPE (MAIN EXCHANGER - 3 WAY GROUP)	997199		•	•		
	PIPE (MAIN EXCHANGER - 3 WAY GROUP)	997200		•	•		
0013	MOUNTING BRACKET (OVERHEAT THERMOSTAT)	997224		•	•		
0014	OVERHEAT THERMOSTAT	996065		•	•		
0015	PIPE CLIP	573809		•	•		
0016	3-WAY VALVE	998069		•	•		
0017	MAIN FLOW SWITCH KIT	65100519		•	•		
0018	TEMPERATURE PROBE	998458		•	•		
0019	DHW MICRO SWITCH	573340		•	•		06/00
	DHW MICRO SWITCH	998921		•	•	07/00	
0020	BRACKET (M/FLOW MICROSWITCH)	573824		•	•		
0021	PIPE FIXING CLIP	571838		•	•		
0022	RETURN GROUP	998072		•	•	07/00	
	RETURN GROUP	573163		•	•		06/00
0023	GASKET 1/2	573528		•	•		
0024	DRAIN VALVE	573727		•	•		
0025	PRESSURE RELIEF VALVE (1/2" 3 BAR)	573172		•	•		
0026	PIPE (EXPANSION VESSEL)	573311		•	•		
0027	CABLE (POWER SUPPLY)	998012		•	•		
0028	PRESSURE GAUGE	571649		•	•		
0029	ON-OFF PUSH BUTTON KIT	997250		•	•		
0030	SUMMER/WINTER SELECTOR KIT	573306		•	•		06/00
	SUMMER/WINTER SELECTOR KIT	997252		•	•	07/00	
0031	CABLE (TIME CLOCK)	997180		•	•		
0032	TIME CLOCK	997207		•	•		
0033	CONTROL PANEL COVER	997144		•	•		
0034	INSPECTION COVER	997138		•	•		
0035	COVER (TIME CLOCK)	997142		•	•		
0036	PLASTIC DOOR COVER	997167		•	•		
0037	WARNING PLATE LID INNER FRAME	997168		•	•		
0038	NAME BADGE	997139		•	•		
0039	REGULATION KNOB KIT	573305		•	•		06/00
	CONTROL KNOB KIT	997251		•	•	07/00	
0040	L.E.D. COVER	573370		•	•		
0041	L.E.D. (POWER INDICATOR)	572913		•	•		
0042	CONTROL PANEL COVER	999509		•	•		
0043	TEMPERATURE L.E.D.S	572912		•	•		
0044	P.C.B. (EX C MI/FFI) (LH)	953730		•	•		06/00
	P.C.B. (EX C MI/FFI ASIC) (LH)	953770		•	•	07/00	
0045	NYLON BUSH (10MM)	569711		•	•		
0046	P.C.B. (EI A FFI/P ASIC) (RH)	952975		•	•	07/00	
	P.C.B. (EI A-FFI) (RH)	952981		•	•		06/00
0047	CABLE (P.C.B.)	952610		•	•		
0049	CABLE CLAMP	571562		•	•		
0050	CABLE HOLDER	569458		•	•		
0051	CABLE HOLDER	573534		•	•		
0052	CONTROL PANEL ROTOR	571558		•	•		06/00
0053	PCB BOX	999329		•	•		
0054	CABLE HOLDER COVER (R.H.)	569713		•	•		
0055	HIGH VOLTAGE WIRING	574272		•	•		
0056	WIRING - LOW VOLTAGE	998104		•	•		12/98
	WIRING - LOW VOLTAGE	998104		•	•	07/00	
	WIRING - LOW VOLTAGE	998046		•	•	01/99	06/00
0057	FAN	572989		•	•		06/00
	FAN	572990		•	•		
	FAN	998807		•	•	07/00	
0058	GASKET (FAN)	573343		•	•		
0059	FLUE INTAKE PLUG	573326		•	•		
0060	FLUE (EXHAUST MANIFOLD / HEADER)	573333		•	•		
0061	VENTURI (EXHAUST/MANIFOLD HEADER)	573314		•	•		



Key N	Description	Manf. Pt. N	Type	EUROCOMBI A		Manf. date	
				23	27	from	to
0062	PANEL (COMBUSTION CHAMBER - FRONT)	573344		●	●		
0063	PANEL (COMBUSTION CHAMBER - SIDE)	573247		●	●		
0064	CABLE CLAMP	570561		●	●		
0066	COVER PLATE	573330		●	●		
0067	COVER PLATE GASKET	573865		●	●		
0068	GASKET (FLUE MANIFOLD)	573337		●	●		
0069	AIR INTAKE COVER	573329		●	●		
0070	SUPPORT PLATE	997203		●	●		
0071	COMPENSATION TUBE	573576		●	●		
0072	AIR PRESSURE SWITCH	571651		●	●		
0073	SILICONE PIPE	569662		●	●		
0074	Y PIECE (AIR PRESSURE)	573327		●	●		
0075	SPRING (FASTENING)	570717		●	●		
0076	SIGHT GLASS HOLDER	573566		●	●		
0077	SIGHT GLASS	65105371		●	●		
0078	SIGHT GLASS - GASKET	998076		●	●		
0079	CABLE (FAN/AIR PRESSURE SWITCH)	573017		●	●		06/00
	CABLE (FAN/AIR PRESSURE SWITCH)	998106	A	●	●	07/00	
	CABLE (P.C.B./FAN/AIR PRESSURE SWITCH)	999119	B	●	●	07/00	
0080	INSULATION PANEL - REAR	998130		●	●		
	INSULATION PANEL - REAR	998132		●	●	07/00	
	INSULATION PANEL - REAR	573723		●	●		06/00
0081	PANEL - L/H COMBUSTION CHAMBER	573243		●	●		
0082	INSULATION PANEL - SIDE	998128		●	●		
	INSULATION PANEL - SIDE	998128		●	●	07/00	
	INSULATION PANEL - SIDE	573720		●	●		06/00
0083	PIPE (MAIN EXCHANGER - PUMP)	573313		●	●		
	PIPE (MAIN EXCHANGER - PUMP)	572906		●	●		
0084	AUTO AIR VENT	564254		●	●		
0085	GASKET 1	569387		●	●		
0086	SPRING (BY-PASS PIPE)	573808		●	●		06/00
	SPRING (BY-PASS PIPE)	998064		●	●	07/00	
0087	O-RING	571449		●	●		06/00
	O-RING	998077		●	●		
	O-RING	998077		●	●	07/00	
0088	BY-PASS PIPE	571826		●	●		06/00
	BY-PASS PIPE	998065		●	●	07/00	
0089	DHW HEAT EXCHANGER	571646		●	●		
	DHW HEAT EXCHANGER	998483		●	●		
0090	O-RING	573825		●	●		
0091	PIPE (MAIN FLOW SWITCH-POSITIVE SIGNAL)	573086		●	●		
0092	O-RING (20-18)	571807		●	●		
0093	1/8" BRASS PLUG	570615		●	●		
0094	PIPE (MAIN FLOW SWITCH - NEGATIVE SIGNAL)	573087		●	●		
0095	PIPE - PRESSURE RELIEF VALVE	573176		●	●		12/98
	PIPE (SAFETY VALVE)	999524		●	●	01/99	
0096	GASKET 3/8	573521		●	●		
0097	PUMP CONNECTOR BRACKET	997146		●	●		
0098	KIT FOR VERT. 1 PUMP ATTACHMENTS+JOLLY	996613		●	●		
0099	PIPE (GAS INLET)	997202		●	●		
0100	O-RING	571965		●	●		
0101	GASKET (SPARK GENERATOR)	574279		●	●		
0102	GAS VALVE (SIT TANDEM)	570732		●	●	01/99	06/00
	GAS VALVE (SIT 845 SIGMA)	999089		●	●		12/98
	GAS VALVE (SIT 845 SIGMA)	999089		●	●	07/00	
0103	PIPE (GAS VALVE/BURNER)	574194		●	●		12/98
	PIPE (GAS VALVE/BURNER)	574194		●	●	07/00	
	PIPE (GAS VALVE/BURNER)	573289		●	●	01/99	06/00
0104	SILICONE SEAL	569443		●	●		
0105	BURNER JET WASHER	572138		●	●		
0106	BURNER JET (NG 1.25)	570248		●	●		
	BURNER JET (L.P.G. 0.72)	570251		●	●		
0107	RIVET	573325		●	●		
0108	SPARK GENERATOR	573023		●	●	01/99	06/00
	SPARK GENERATOR (KIT)	65100514		●	●		12/98
	SPARK GENERATOR (KIT)	65100514		●	●	07/00	
0109	COMPENSATION TUBE	573576		●	●		
0110	CABLE (DETECTION ELECTRODE/P.C.B.)	571657		●	●		
0111	CABLE (IGNITION ELECTRODE)	571662		●	●		
0112	ELECTRODE (DETECTION)	573441		●	●		
0113	CONNECTOR BLOCK	571787		●	●		





Key N	Description	Manf. Pt. N	Type	EUROCOMBI A		Manf. date	
				23	27	from	to
0114	BLIND GROMMET	569720		●	●		
0115	CABLE HOLDER COVER (L.H.)	569714		●	●		
0116	GASKET 1/4	569390		●	●		
0117	IGNITION ELECTRODE CABLE RUBBER	998147		●	●		
0118	ELECTRODE (IGNITION R.H.)	569560		●	●		
0119	ELECTRODE (IGNITION L.H.)	569561		●	●		
0120	BURNER 13 RAMP (LPG)	996417		●	●		
	BURNER 13 RAMP (NG)	996418		●	●		
	BURNER 15 RAMP (LPG)	996422		●	●		
	BURNER 15 RAMP (NG)	996419		●	●		
0121	MAIN HEAT EXCHANGER	998138		●	●		
	MAIN HEAT EXCHANGER	998139		●	●		
0122	PANEL - FRONT COMBUSTION CHAMBER	572647		●	●		12/98
	PANEL - FRONT COMBUSTION CHAMBER	997766		●	●	01/99	
	PANEL - FRONT COMBUSTION CHAMBER	572648		●	●		
0123	PANEL (R/H - COMBUSTION CHAMBER)	573242		●	●		
0124	INSULATION PANEL - FRONT	65102485		●	●		
	INSULATION PANEL - FRONT	998129		●	●		
0125	FLUE HOOD	997767		●	●		
	FLUE HOOD	998103		●	●		
0126	FIXING PLATE - FAN	573465		●	●		
	FIXING PLATE - FAN	992047		●	●		06/00
0127	SPARK GENERATOR SUPPORT	573285		●	●	01/99	06/00
0128	CLAMP	573022		●	●	01/99	06/00
0129	HIGH VOLTAGE CABLE (GAS VALVE)	998035		●	●	01/99	06/00
0130	FIXING SPRING	998043		●	●		
0134	CABLE CLAMP	998108		●	●	07/00	
0301	CASE PANEL - SIDE	997267		●	●		
0302	CASE PANEL - FRONT	997721		●	●	07/00	
	CASE PANEL - FRONT	997052		●	●		06/00
0311	D.H.W. ACTUATOR KIT	571444		●	●		
0321	OPERATOR COILS (SIT TANDEM)	570712		●	●	01/99	06/00
0322	MODUREG COIL (SIT 24V GAS VALVE)	573740		●	●	01/99	06/00
0323	GAS MODULATOR CARTRIDGE	573745		●	●	01/99	06/00
0361	CENTRAL HEATING BY-PASS KIT	571443		●	●		
0362	D.H.W. PRESSURE SWITCH KIT	571442		●	●		
0363	3-WAY SPRING KIT	571447		●	●		
0364	D.H.W. DIAPHRAGM VALVE	571446		●	●		
0371	DIAPHRAGM (MAIN FLOW SWITCH)	571547		●	●		
0372	MAGNET (MAIN FLOW SWITCH)	571772		●	●		
0373	SPRING (MAIN FLOW SWITCH)	571771		●	●		
0374	TOP CAP (MAIN FLOW SWITCH)	571770		●	●		
0375	MICROSWITCH - MAIN FLOW SWITCH	998172		●	●		
0511	ISOLATING VALVE - 3/4" FLOW	570744		●	●		
0512	PIPE - C.H. FLOW	998812		●	●		
0513	ISOLATING VALVE - GAS INLET	571000		●	●		
0514	ISOLATING VALVE - COLD WATER INLET	570743		●	●		
0515	DRAIN VALVE	998809		●	●		
0516	ISOLATING VALVE - 3/4" CH RETURN	999694		●	●		
0517	GASKET 3/4	573520		●	●		
0518	PIPE - CH RETURN	998811		●	●		
0519	GASKET 1/2	573528		●	●		
0520	PIPE - COLD WATER INLET	997706		●	●		
0521	PIPE - GAS INLET	997700		●	●		
0522	PIPE - DHW OUTLET	998810		●	●		
0531	BURNER JET FULL KIT (NG)	569281		●	●		
0532	BURNER JET FULL KIT (LPG)	569282		●	●		

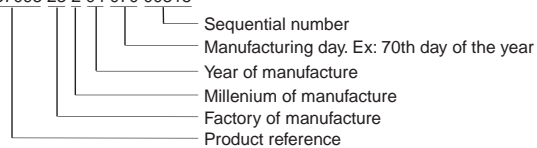
## LIST OF THE ABBREVIATIONS

HW .....	: Hot water.
CW .....	: Cold water.
C .....	: Ceramic resistance (normal heating).
Ca .....	: Ceramic resistance (accelerated heating)
TP .....	: Immersion heater.
1F .....	: With fittings.
2F .....	: Without fittings.
3F .....	: With fittings and another outlet connection.
AMI .....	: With mixing valve.
SMI .....	: Without mixing valve.
PUISS .....	: Power of th appliance.
PN .....	: Appliance with normal pression.
LP .....	: Appliance with low pression.
PV .....	: Appliance with variable power.
PF .....	: Appliance with fixed power..

## IDENTIFICATION PLATE

### SERIAL NUMBER

Ex: 0537095 23 2 04 070 00315



The indications mentioned on the prices, commercial or technical literature and the scheme are written for your guidance and are available at a given time. The CONSTRUCTOR retains the power to modify the presentation, the form, the size, the conception or the material of the products.